



COMPAÑIA DE DESARROLLO GANADERO S.A.

Oficina: Artigas 2411 y Damas Argentinas
 Telefax.: (021) 291-089/ 291-920/ 295-395/ 295-396
 E-mail: codegasa@rieder.net.py

Recinto Ferial: Ruta Limpio Km 19,5
 Teléfono: (021) 752-287
 Web www.codega.com.py

INFORME DE PRECIOS EN FERIA DE CONSUMO

Dias de Feria: de **CONSUMO**: Martes y Viernes desde las 14:30 hs. - de **INVERNADA**: Miércoles desde las 14:30 hs

Feria N°: 013

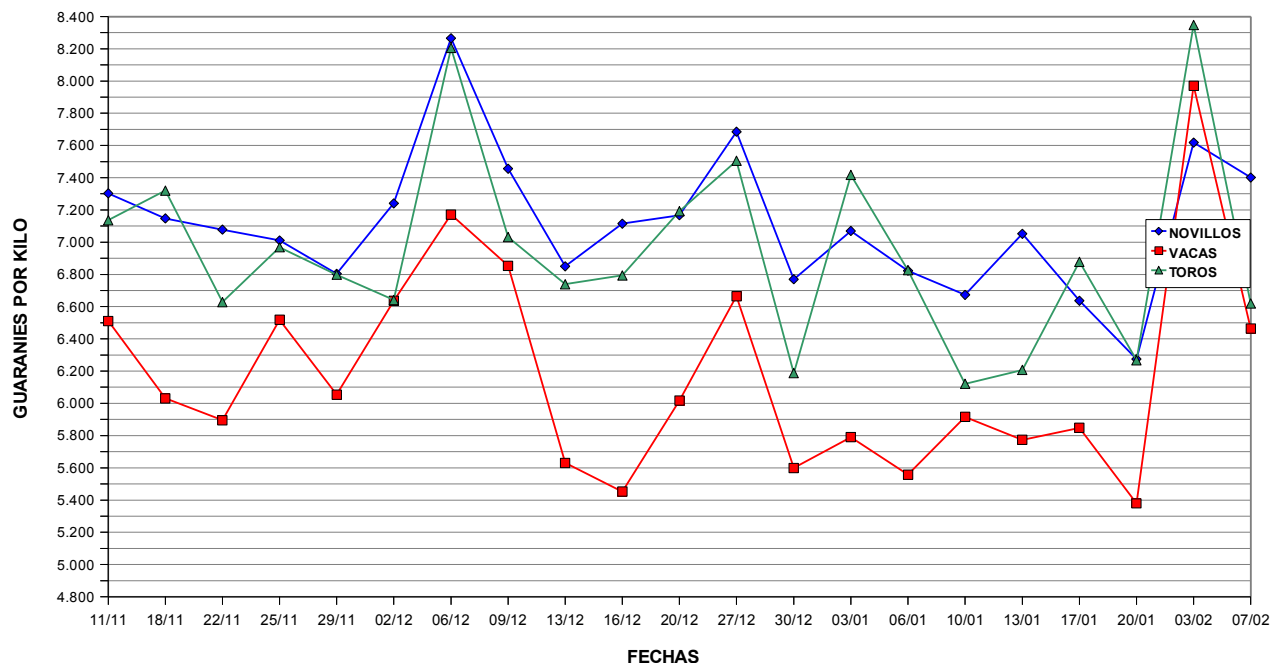
Fecha: 07/02/2012

ORIGEN	VACA				NOVILL				TOROS			
	Peso Prom.	Precio Prom.	Precio Min.	Precio Max.	Peso Prom.	Precio Prom.	Precio Min.	Precio Max.	Peso Prom.	Precio Prom.	Precio Min.	Precio Max.
Amambay	---	---	---	---	345	7.155	6.700	7.590	---	---	---	---
Salazar - Chaco	---	---	---	---	285	6.110	5.840	7.010	344	6.280	5.550	7.010
Fortin Caballero	---	---	---	---	433	8.046	8.000	8.200	---	---	---	---
San Pedro	---	---	---	---	391	7.827	7.580	7.920	---	---	---	---
Caapucu	374	6.464	6.310	6.840	---	---	---	---	---	---	---	---

Promedio General de la Feria

	Cant.	Peso Prom.	Prec. Prom.	Prec. Prom. Gs	Prec. Min.	Prec. Max	Prec.U\$S
							4.700
NOVILLOS	145	363	7.401	2.686.563	5.840	8.200	1,57
TOROS	23	339	6.620	2.244.180	5.550	7.200	1,41
VACAS	8	374	6.464	2.417.536	6.310	6.840	1,38
TOTAL	176						

Promedio de precios del 11/11/11 al 07/02/12



CODEGA S.A. - Impulsando la Pecuaria.-

PRECIOS PROMEDIOS

FECHA	NOVILLOS	VACAS	TOROS
11/11	7.303	6.511	7.136
18/11	7.147	6.031	7.320
22/11	7.078	5.895	6.628
25/11	7.011	6.518	6.968
29/11	6.804	6.054	6.798
02/12	7.241	6.636	6.642
06/12	8.265	7.171	8.205
09/12	7.456	6.853	7.031
13/12	6.850	5.630	6.739
16/12	7.115	5.452	6.794
20/12	7.167	6.017	7.192
27/12	7.685	6.665	7.505
30/12	6.770	5.599	6.187
03/01	7.069	5.790	7.417
06/01	6.823	5.557	6.826
10/01	6.673	5.916	6.121
13/01	7.052	5.774	6.207
17/01	6.637	5.848	6.878
20/01	6.275	5.379	6.267
03/02	7.618	7.971	8.348
07/02	7.401	6.464	6.620